

Case presentation: CBCT with SCANORA® 3Dx Severe Sphenoidal Sinusitis due to Obstruction of the Sphenoethmoidal Recess

© Digitales Diagnostikzentrum Breisgau, Germany
PD Dr. Dirk Schulze, Dr. Dennis Rottke

FINDINGS

Findings

The axial image reveals a completely obstructed right sphenoidal sinus with reactive widening of all sinus walls (Fig. 1).

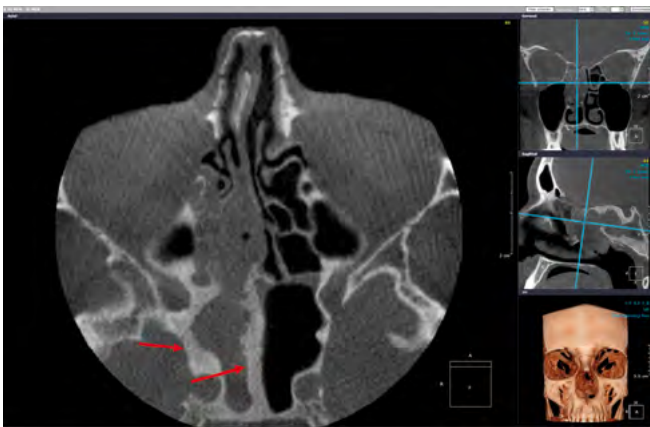


Fig. 1 Axial view, right sphenoidal sinus, widened sinus walls.

Anterior to the right sphenoidal sinus an obstruction of the middle nasal meatus and the adjacent ethmoidal cells can be seen (Fig 2, 3 and 4).

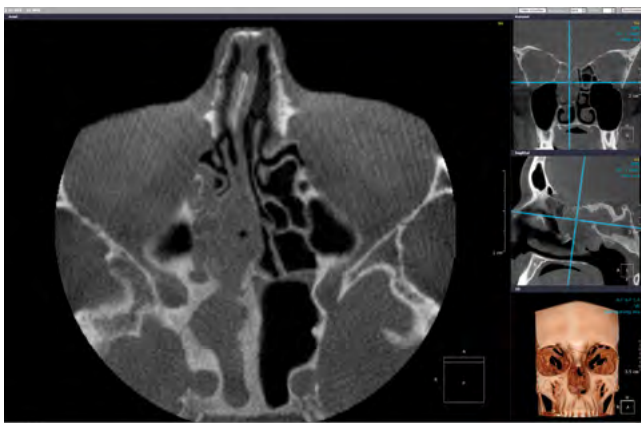


Fig. 2 Axial view.

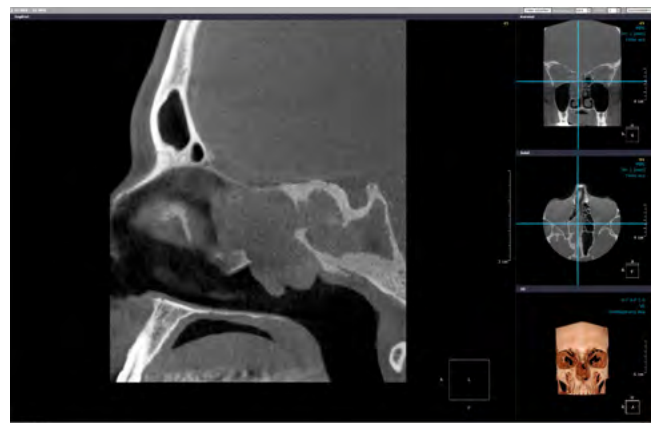


Fig. 3 Sagittal view.

FINDINGS

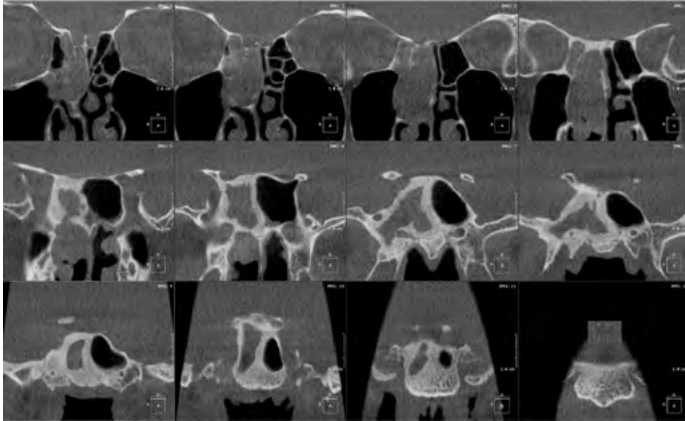


Fig. 2, 3 and 4 Axial, sagittal and coronal views, obstruction of the middle nasal meatus and ethmoidal cells.

Moreover, these soft tissue isodense structures show some polypoidal, (editor's comment: resembling a polyp), characteristic at their lower boundaries (Fig. 5).



Fig. 5 Sagittal view, polypoidal soft tissue structures.

Evaluation

Suspected nasal polyps in the right middle nasal meatus which lead to an obstruction of the right sphenothmoidal recess causing a severe chronic sphenoidal sinusitis and a chronic ethmoidal sinusitis.

Sphenoidal sinusitis seems to be a long-lasting chronic inflammation, because bony wall thickening is a typical sign of chronic inflammatory irritation.